

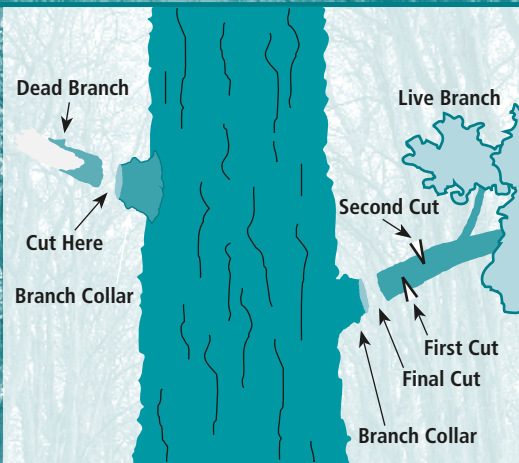
Landscaping With Trees

Planting trees and shrubs can add beauty and value to your property. If you plant, take extra care to choose a spot away from overhead and underground power lines. Also, avoid planting shrubs and vines close to pad-mounted transformers. Ten feet of clearance in front and two feet on the other three sides are required to open the transformer when the equipment needs maintenance.

Trees & Reliable Electric Power

At Idaho Power we've learned trees and power lines don't mix well so we have developed a program to cut back trees to help clear our lines. By doing so we balance the need to maintain safe and reliable service for our customers

When we clear lines in your neighborhood, you may have questions about our operations. We hope the following information will help you understand how and why we prune trees.



Proper Pruning Tips

When pruning an established tree, remove about 1/3 of the tree's branches. Do not flush cut; always leave the branch collar intact. We don't recommend painting the cut surface



We Clear Our Lines To Protect Electrical Service

When tree branches come in contact with power lines they often cause outages. That happens most often in windy, stormy weather.

Idaho Power estimates that up to 30 percent of all electrical outages in the company's service area are caused by trees that fall onto power lines or tree limbs that come in contact with power lines.

Some outages are momentary, causing digital clocks to blink or computers to lose data. Others last longer, sometimes affecting essential services like traffic signals and hospitals.

With our tree pruning operations, Idaho Power can reduce the number and length of tree-related outages.

We Clear Our Lines To Protect You

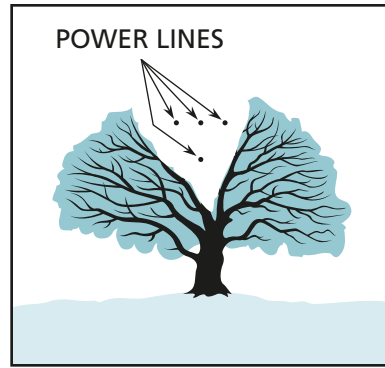
Falling trees and tree limbs can cause high voltage wires to break or sag to the ground, in some cases causing life-threatening situations for motorists and pedestrians.

Overgrown tree limbs near power lines also pose a danger to children. An unsuspecting child, climbing an overgrown tree, can easily come in contact with a live power line.

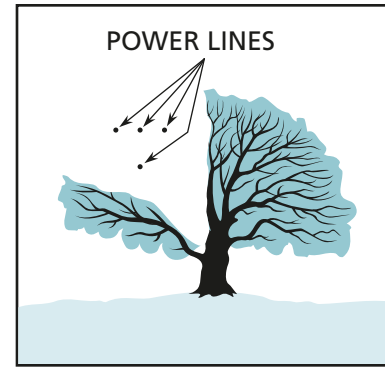
We also want to protect our line crews, who often are exposed to dangerous situations when they are called out to repair a tree-related outage during stormy weather.

Who Clears The Lines?

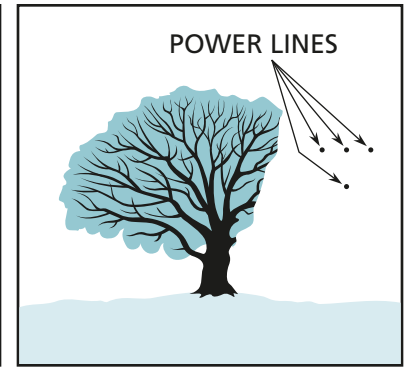
Idaho Power hires qualified line-clearing contractors to clear our lines. These crews know how to create the necessary line clearances while considering the tree's species, size and natural shape. Our contractors use a pruning procedure called directional or natural pruning.



Directional Pruning
Under Lines



Side Clearing
Deciduous ("L" Cut)



Side Clearing
Deciduous

This method is recommended by the U.S. Forest Service, and the International Society of Arboriculture.

This technique allows us to train the tree to grow away from power lines by removing only the branches that come in contact with the wires. By selectively pruning the tree's branches, we can retain much of the tree's natural crown.

How Often Do We Clear Our Lines?

We clear the trees along our distribution lines on a regular maintenance cycle. The shape, size and growth rate of trees affect how often they need to be pruned. Generally, our crews try to create eight feet of clearance alongside, 10 feet of clearance below and no branches above our lines to avoid problems with snow loading in winter.

Removing Trees

Sometimes it's necessary to remove a tree that has become a hazard to the public or our electrical system.

The wood from the tree belongs to the property owner and will be left behind. Small pieces of wood and branches are chipped at the job site and hauled away.

If you have a tree near one of our lines that you think needs to be pruned or removed, you should call your local Idaho Power office.

If you notice a tree interfering with power lines, please call us. Never attempt to prune a tree near our wires yourself.

Choosing & Planting Trees

It makes good sense to think ahead before you plant a tree. That beautiful oak or spruce will make out much better away from overhead lines. If your landscaping plans call for a tree near electric lines, choose a low-growing variety.

Here are some trees that are ideal for planting beneath power lines and most are available at your local nursery:

- White Flowering Dogwood
- Radiant Crabapple
- Amanogawa Cherry
- Thundercloud Plum

If you would like further help choosing a tree, go to www.idahopower.com/customerservice/trees/