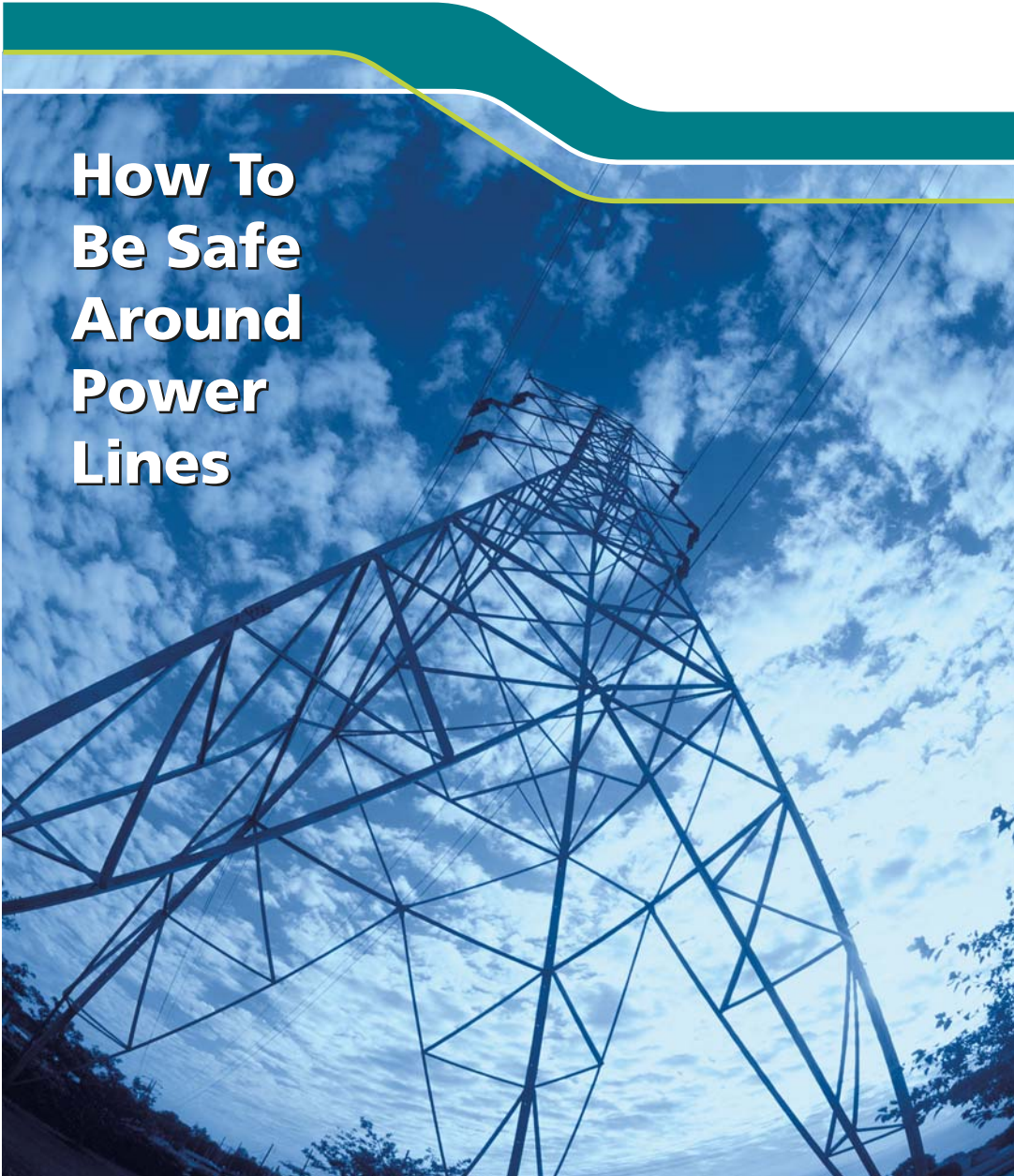
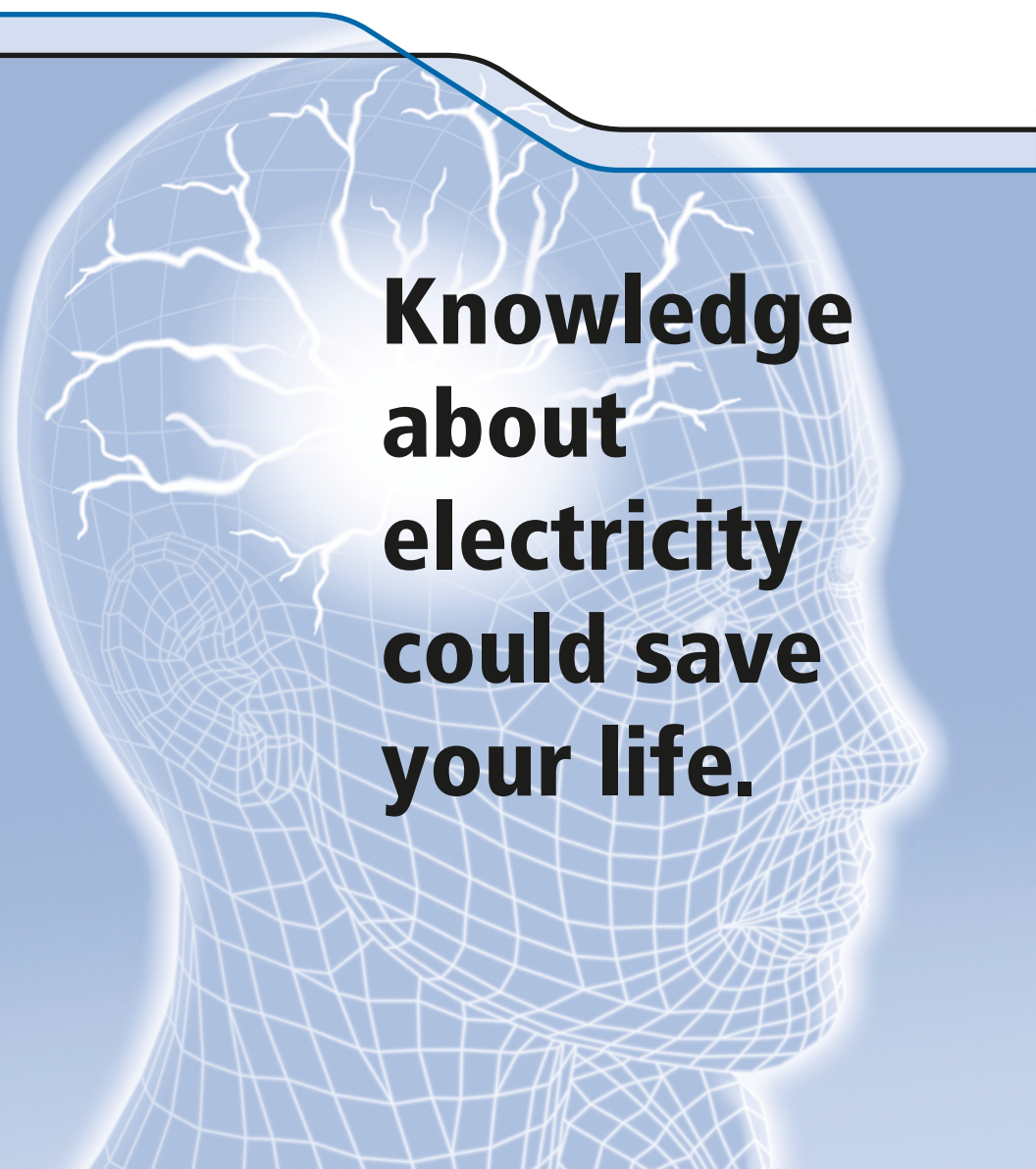




# How To Be Safe Around Power Lines





**Knowledge  
about  
electricity  
could save  
your life.**

**Idaho Power** keeps power lines high in the air or buried beneath the ground because they can be dangerous. The information in this brochure is especially important to you because you sometimes work near power lines. It includes safety precautions you should take to prevent serious or fatal injuries from electrical accidents. Please take a moment to read the following safety tips.



## The 10-foot Rule

Occupational Safety and Health Administration (OSHA) regulations require that contractors, workers and their tools stay at least 10 feet away from overhead power lines of 50,000 volts or less while working. If you don't, not only are you placing yourself and possibly others in danger, you are breaking the law and could be fined.

If the voltage on the line you are working near is higher than 50,000 volts, keep a wider distance. Higher voltages can be difficult to recognize. If you suspect the line is higher than 50,000 volts, take extra precautions.

- Check with your boss or the job superintendent. They should already know the voltages of lines near heavy equipment or other employee work areas.
- Contact Idaho Power at 388-2200 and request assistance. An Idaho Power representative can determine the voltage of any lines in your area.



## Underground Lines

Digging into underground power lines can be just as dangerous as contacting an overhead line. Underground electrical lines and gas pipelines are everywhere. Contact with them may be fatal; therefore, the best thing to do is make sure that there is no danger.

Before digging or making a hole, always locate underground public utilities such as electricity, gas, water, drainage, or communications. Call Digline at 1-800-342-1585 or Idaho Power at 1-208-388-2323. Someone will come to your work site to check out the area. According to the law, if you are



planning to dig more than 15 inches in vertical depth, you must call first.

## Overhead Lines

Careful positioning of heavy equipment is required to ensure safety for workers and equipment operators. The location of heavy equipment such as cranes should be planned in consultation with Idaho Power. Other tools, such as bullfloat handles, rebar and long sections of metal conduit also can be dangerous when used near power lines.

Even with planning, heavy equipment and work operations may need to be located near high-voltage lines. If the equipment must operate within 10 feet of lines, Idaho Power must be consulted about proper safety precautions before starting work. The lines can be de-energized, grounded or other protective measures can be taken.



## Safety Watches or Spotters

Use spotters when operating lift trucks or other power equipment to make sure overhead lines aren't contacted. The spotter should be positioned near the heavy equipment the entire time it is being operated near high-voltage lines. The spotter's only duties should be observing the work and communicating with the operator to ensure the equipment never gets closer than 10 feet to a power line.



## If Contact Occurs

If contact does occur, follow these guidelines:

- If you're on the ground, stay on the ground — and stay away. Coming close to the energized equipment can only increase the danger.
- If you're in your vehicle or equipment, stay put. This is your safest option until help arrives.
- If you must leave the vehicle because of fire or some other life-threatening situation, JUMP, with both feet together. Hop with both feet together until you're safely away. Never touch the ground and the energized piece of equipment at the same time.
- If you can safely move the equipment away from the lines, do so. Otherwise, don't move it until the lines can be de-energized.
- If a line has fallen on the ground, or on some other object or piece of equipment, always assume it is energized. Stay clear, keep others away and contact Idaho Power.
- Keep a safe distance from any victim who is in direct contact with electricity. Call 911 immediately! Do not try to touch or make direct contact with the victim because you may be electrocuted.

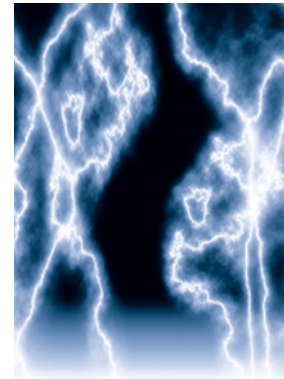


## Farm And Ranch Work

Electricity always tries to make contact with the ground. It is silent and can be fatal. It may be conducted through metal, water, trees, even people.

To avoid serious accidents or death, always stay alert. Remember:

- Check for overhead power lines before lifting irrigation pipes or clearing debris from them.
- Never stack hay bales or other items under overhead power lines.
- Do not spray water on power lines or equipment.
- Always look for electrical lines that may interfere with your work.
- Do not take risks. Carefully watch what you are doing.
- Keep farm machinery away from power lines, poles and guy wires (the support cables for power poles). If you strike a guy wire or pole, call Idaho Power immediately at 1-800-488-6151. You may have weakened the structure or created slack in the line.



## Safe Work Habits

The best way to avoid injury from power lines is to make a personal commitment to safety. All the rules, regulations and safety reminders in the world are useless unless they're observed.

Your commitment should be consistent and ongoing, and it should be based on the following principle: No building, equipment, deadline or profit is worth a human life.

For information and for safety assistance around power lines, call **1-800-488-6151**.



P.O. Box 70 (83707)  
1221 W. Idaho St.  
Boise, ID 83702

[www.idahopower.com](http://www.idahopower.com)

CID# 46805  
© 2006 Idaho Power