

Welcome to the Langley Gulch Open House

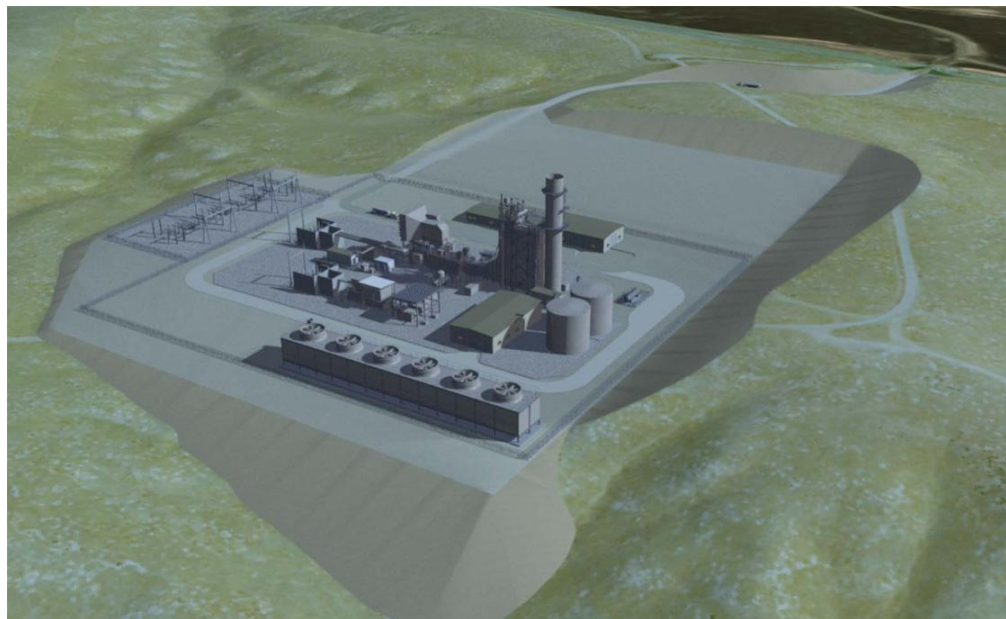
July 1, 2009



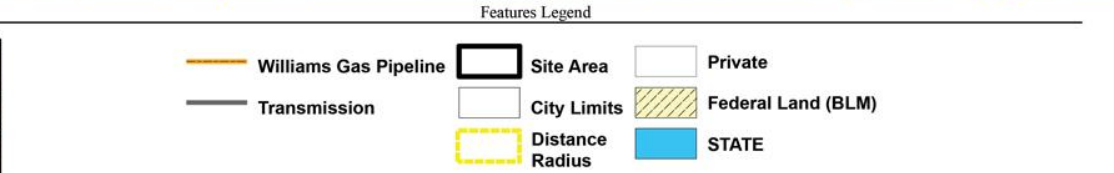
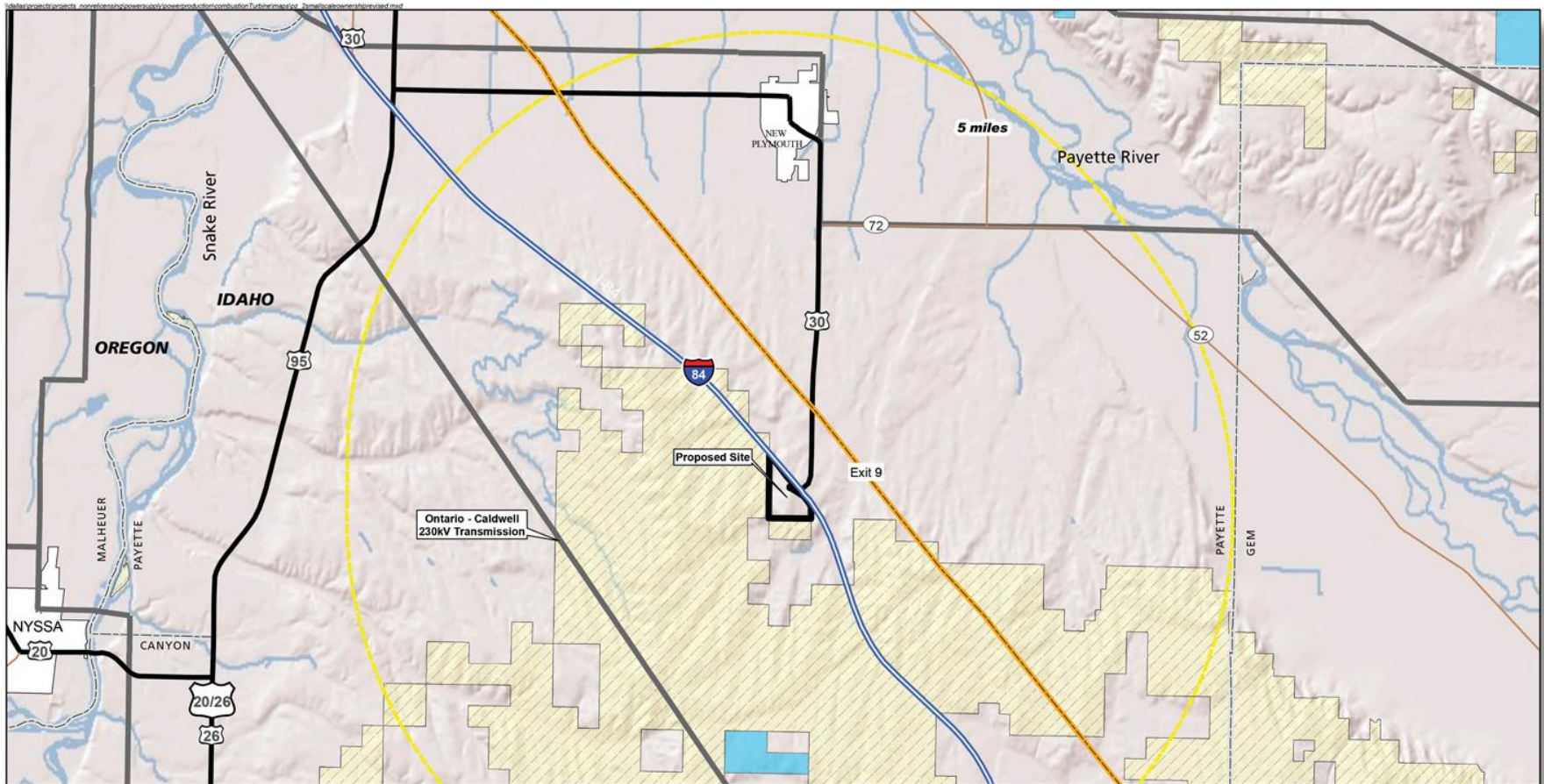
Project Overview

Langley Gulch Power Plant meets our customer needs

- Provides approximately 300 megawatts of electricity year-round
- Uses two turbines, one with natural gas and the other steam
- Integrates intermittent, alternative wind and solar
- Will be clean, efficient and quiet



Langley Gulch Location



Benefits and Features

Economic support for community

- 120 new construction jobs
- Use of local services, materials and equipment suppliers
- Additional tax revenue for Payette County, including applicable tax code districts

Safe, reliable operations

- Emissions will have Best Available Control Technology (BACT)
- Minimal impact to air quality
- Will meet Idaho Department of Environmental Quality standards
- Will meet all other permitting agencies specific project requirements

Project Timeline

Schedule of previous and upcoming activities

RFP Process & Selection	April 2008-Feb. 2009
PUC Process	March-August 2009
Permitting <ul style="list-style-type: none"> • Permit to Construct (Air Quality) application • Application for Re-zone, Development Agreement, and Condition Use Permit with Payette County • Payette County P&Z Hearing 	March 2009-July 2010 File Week of July 6, 2009 File Summer 2009 Late Summer/Early Fall 2009
Construction	August 2010-2012
Start-up & Testing	June-November 2012
Final Completion	2012

Transmission Overview

See the Langley Gulch Informational Poster Boards for more information on this section.



Thank You

